



北京京能清潔能源電力股份有限公司

(股份代號：)

海外監管公告

13.10B

(www.shclearing.com)

(www.chinamoney.com.cn)

2014

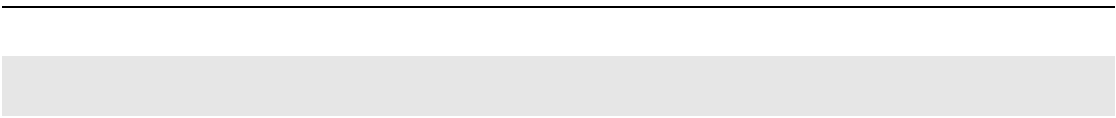
北京京能清潔能源電力股份有限公司

陸海軍

.

2014





1

2

3

1

2

3

4

5

6

1

2

3



4

5

6

7

8

9

CDM

5-1

2013 6 30

	451,235.94	73.37%

	37,265.00	6.06%
H	126,489.60	20.57%
	614,990.55	100.00%

1

2

5-2

			/	

			/	

3

5-3

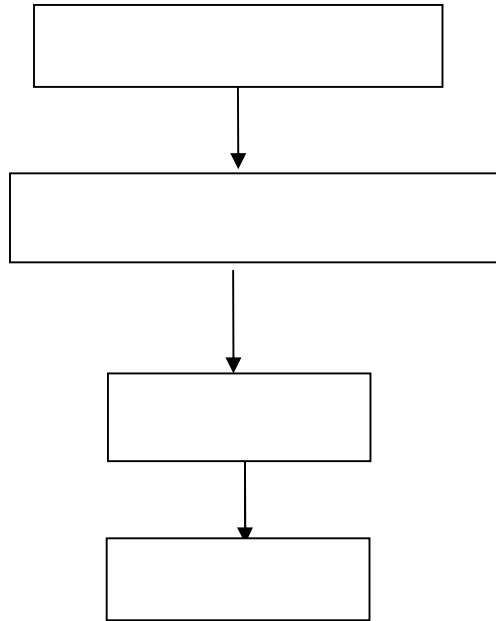
10

2013 6 30

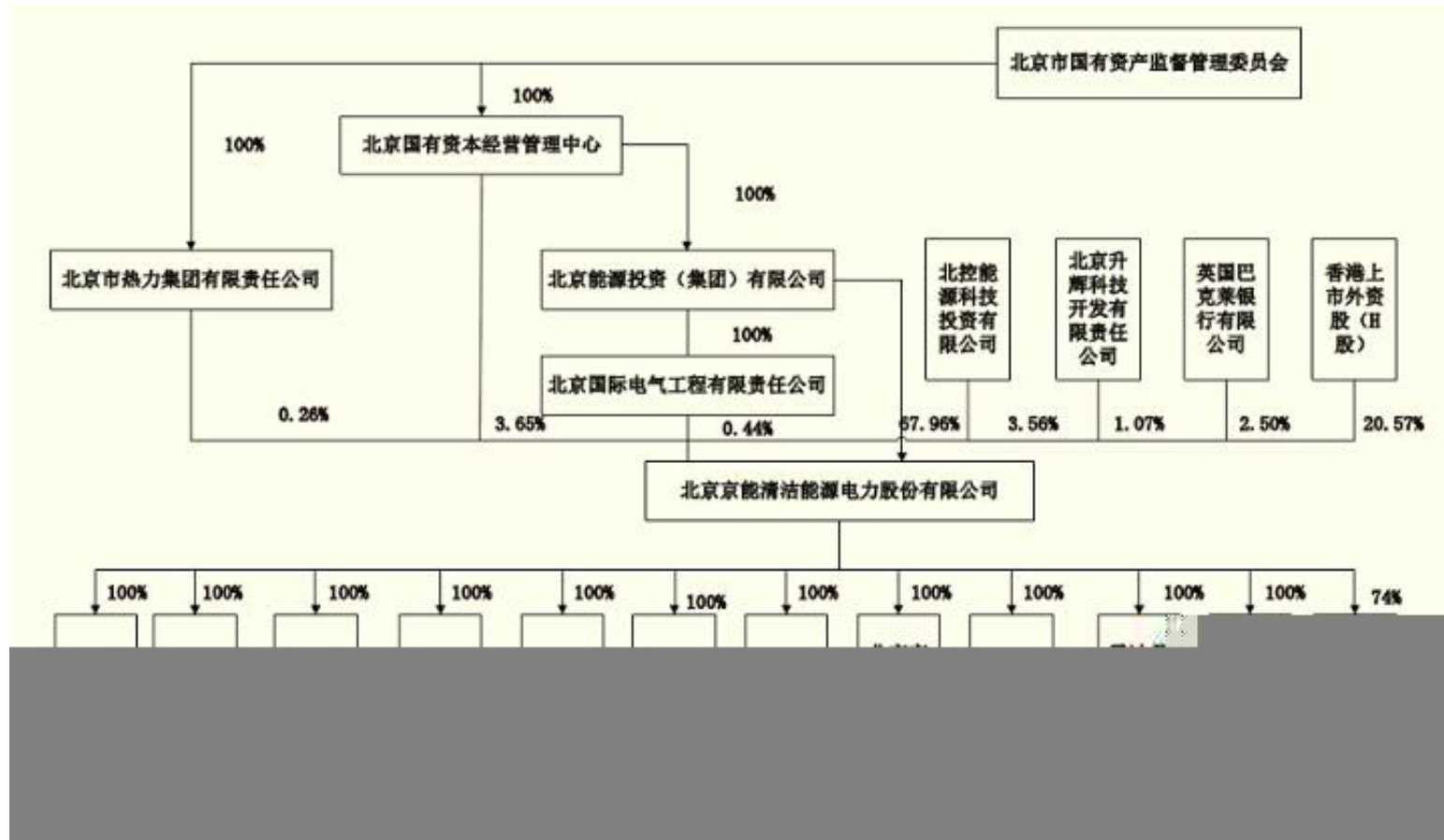
		%	
	5,780,096,811.00	94.70	-

5-1 A

2013 6 30



5-1 B



3

4

5

6

56 =

4 b

1Â

2.80

,

7

O

b

10

11

1

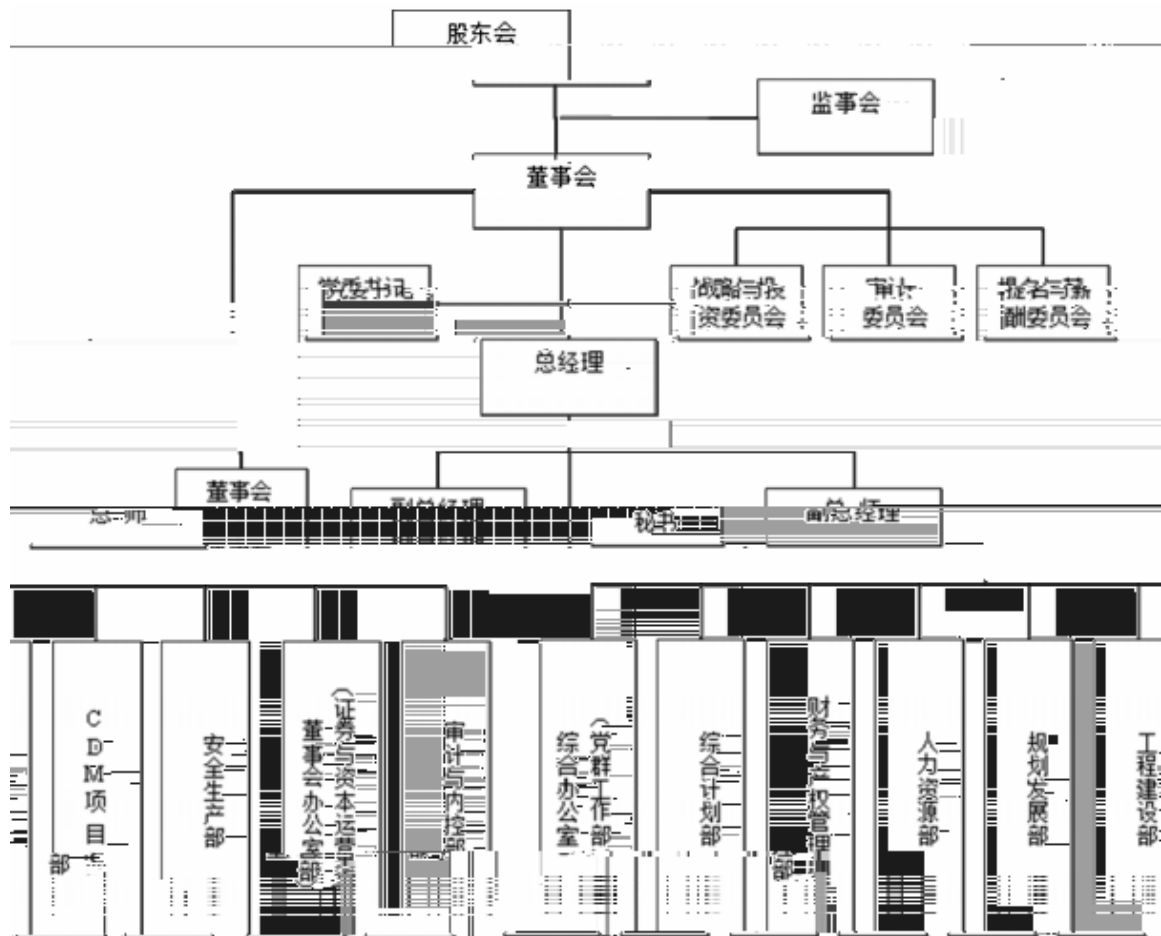


2

3



5-2



2

3

4

5

6

7 CDM

8

9



10

1



1

2

3

2



3

4

5

6

7

1

2

3

8

9

10

11

12

5-9



1

1



2

3



2

3

	2013		2012		2011		2010	
		(%)		(%)		(%)		(%)
%	28.77		27.93		23.41		18.19	

1

1



		()		(MWh)	

	2013	2012	2011	2010

3 CDM



1

2



1

2

3

5-17 2013 9

				%	2013 9	2014	2015	2016	
					504,292.42	582,569.00	19,000.00	0.00	

5-18

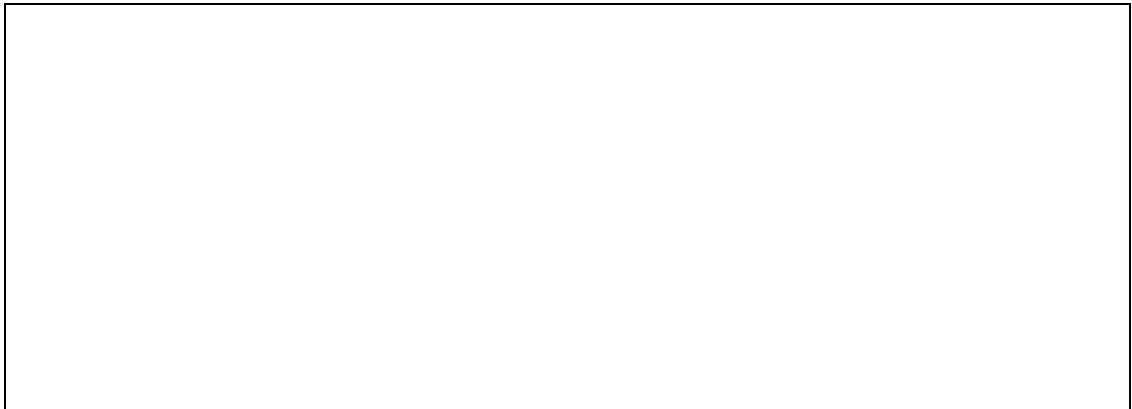
					MW	
	--	--	--	--	160.00	--



2

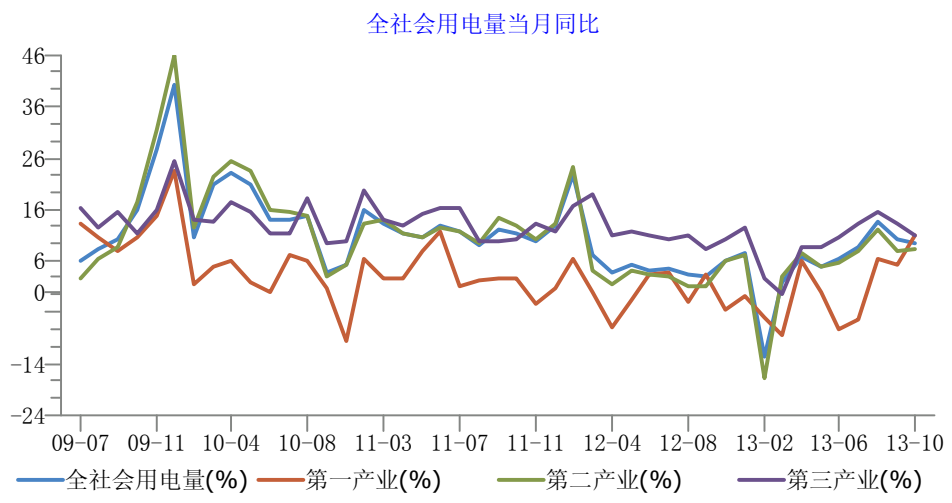
3

5-3 '1+4+N'+X





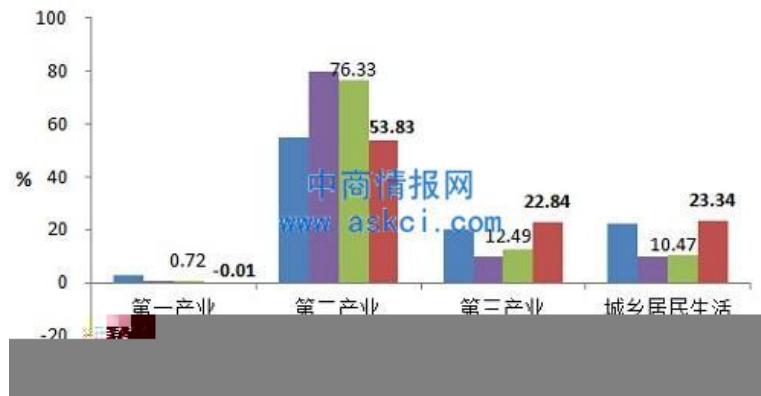
5-5



5-6 2011-2012



5-7 2009-2012



2

3

5-19 2012

表 1

单位:万千瓦

	全国	水电	火电	核电	风电	太阳能	其他
2012 年发电装机容量	114491	24890	81917	1257	6083	328	16
其中当年新增装机容量	8020	1551	5065	—	1285	119	



5-20

			2010	2015		

			2010	2015		

5-21 2015

/	2010			2015		
			%			%
	-	6,940.00	100.00	-	9,000.00	100.00

1

2

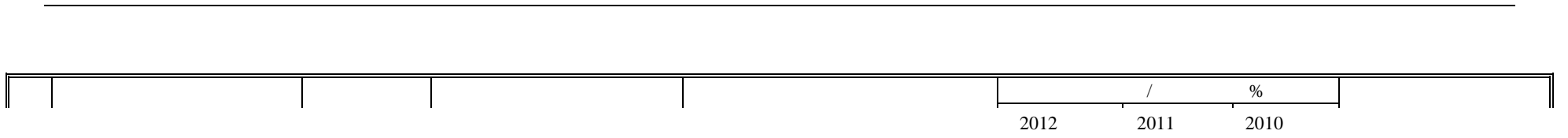
3

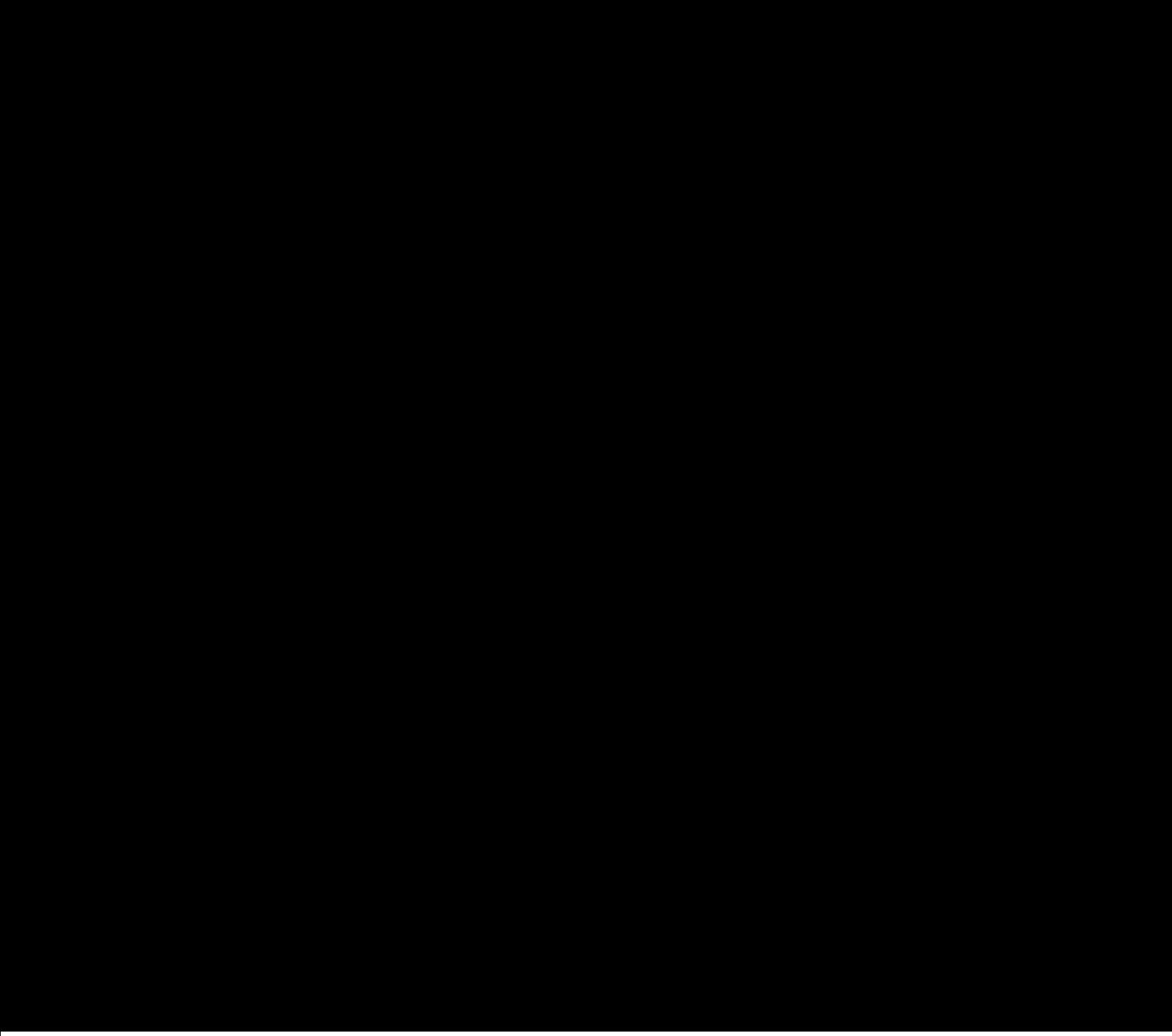
4



5

6





	2013 6 30	2012 12 31	2011 12 31	2010 12 31
	552,502.67	612,107.77	505,079.87	244,801.13

	2013	2012	2011	2010
	6 30	12 31	12 31	12 31

	2013 1-6	2012 年度	2011	2010
“-”	72,349.17	111,560.43	107,339.31	54,721.85
“-”)	62,803.84	98,965.69	90,108.29	49,536.83
	57,907.07	91,141.68	80,961.77	46,229.15

6-9

	2013 1-6	2012	2011	2010
	427,595.96	491,883.58	524,512.09	478,504.60
	186,310.06	311,132.13	333,815.48	319,153.64
	241,285.90	180,751.44	190,696.61	159,350.96
	17,233.67	82,768.12	50,994.93	38,175.78
	159,530.36	519,955.44	381,094.31	235,667.07
	-142,296.70	-437,187.32	-330,099.38	-197,491.29

	2013 1-6	2012	2011	2010

	2013 1-6	2012	2011	2010
	11,695.01	22,480.55	22,503.43	12,702.65
	21,982.67	28,417.85	23,754.75	9,427.12
"_"	71,222.40	83,281.31	48,033.48	25,661.02
"_"	73,422.38	86,821.49	50,546.79	27,481.25
"_"	73,422.38	87,477.91	50,546.79	29,800.84
	73,422.38	87,477.91	50,546.79	29,800.84

	2013 1-6	2012	2011	2010
	12,679.59	24,858.19	26,663.22	22,882.91
	6,108.62	8,706.35	6,539.42	4,573.71
	6,570.97	16,151.84	20,123.80	18,309.20
	51,843.44	227,848.99	66,756.61	41,775.67
	199,631.61	644,896.65	232,292.46	147,319.63
	-147,788.17	-417,047.66	-165,535.85	-105,543.96
	261,090.00	786,241.70	400,146.87	201,877.89
	176,479.98	448,290.79	95,707.48	114,858.02
	84,610.02	337,950.91	304,439.39	87,019.87

	2013 1-6	2012	2011	2010
	-400.44	687.09	-401.99	0.00
	-57,007.62	-62,257.83	158,625.35	-214.89
	48,600.23	105,607.85	167,865.68	9,240.33

6-13

	2013 6 30	2012 12 31	2011 12 31	2010 12 31

6-14

	2013年6月30日		2012年12月31日		2011年12月31日		2010年12月31日	
		%		%		%		%
	552,502.67	17.95	612,107.77	20.35	505,079.87	20.64	244,801.13	12.21

6-15

	2013 6 30	2012 12 31	2011 12 31	2010 12 31
	159,838.53	201,455.31	149,992.45	118,635.81

6-16

	2012		2011		2010			
	159,838.53	100.00	201,455.31	100.00	149,992.45	100.00	118,635.81	100.00

					%
			145,300.30		90.91

3

6-20

	2013 6		2012		2011		2010		2009	
		(%)		(%)		(%)		(%)		(%)
	20,431.21	100.00	17,765.02	100.00	10,271.17	100.00	11,241.53	100.00	30,992.93	100.00

6-21

	2013 6 30		2012 12 31		2011 12 31		2010 12 31	
		(%)		(%)		(%)		(%)
	4,618.68	100.00	2,120.78	100.00	3,633.31	100.00	4,643.63	100.00

6-22 2012

=====

%

	2013 6		2012		2011		2010	
		%		%				
	151,620.62	100.00	119,830.50	100.00	80,268.23	100.00	31,852.91	100.00

6-25 2012

					%	
ã						

ã

	2013		2012年12月31日		2011年12月31日		2010年12月31日	
		(%)		(%)		(%)		(%)
	6,967.70	100.00	6,980.01	100.00	5,144.47	100.00	4,060.91	100.00

2

1

2

6-28

	2013 6	2012	2011	2010
	1,864,655.38	1,649,531.75	1,334,375.11	1,298,825.52

					%	
			405,103.92	282,745.83		

6-30

	2013年6月30日		2012年12月31日		2011年12月31日		2010年12月31日	
		%		%		%		%
	787,323.73	37.67	657,376.05	31.87	714,440.10	46.68	390,693.51	30.13
	1,302,526.72	62.33	1,405,305.72	68.13	815,975.40	53.32	906,130.90	69.87
	2,089,850.45	100.00	2,062,681.78	100.00	1,530,415.50	100.00	1,296,824.41	100.00

1

1



6-31

6-32

	2013 6		2012		2011		2010	
		%		%		%		%
	165,465.61	100.00	134,953.41	100.00	117,576.02	100.00	87,938.30	100.00

6-33 2012

13,215.07

5

6

6-35

	2013		2012		2011		2010	
	6	%		%		%		%
	128,586.07	100.00	125,689.54	100.00	27,560.68	100.00	8,384.16	100.00

6-36 2012

				(%)
		97,000.30		77.17

					(%)
			120,697.30		93.87

2

1

	2013 6 30		2012 12 31		2011 12 31		2010 12 31	
		%		%		%		%
	827,102.94	100.00	929,729.36	100.00	811,643.49	100.00	900,917.00	100.00

6-39 2013 6

--	--	--	--	--	--



2

3

4

	2013 1-6		2012		2011		2010	
		%		%		%		%
	71.42	100.00	3,169.54	100.00	401.00	100.00	70.24	100.00

6-46

	2013 1-6	2012	2011	2010
	241,285.90	180,751.44	190,696.61	159,350.96
	-142,296.70	-437,187.32	-330,099.38	-197,491.29
	-141,962.16	219,673.90	320,157.96	25,842.85
	-400.44	602.87	-470.15	-740.48
	-43,373.39	-36,159.11	180,285.04	-13,037.97
	195,195.87	238,569.26	244,344.02	64,058.98

2

3

6-47

	2013 6 30	2012 12 31	2011 12 31	2010 12 31

6-48

	2013 6 30	2012 12 31	2011 12 31	2010 12 31
/				
/				

1

6-49

	2013 6		2012		2011		2010	
		(%)		(%)		(%)		(%)
	1,260,247.00	100.00	1,357,266.23	100.00	1,424,207.71	100.00	1,176,769.22	100.00

2

6-50 2012

	279,307.73	148,229.14	929,729.36	1,357,266.23	100.00

6-51 2013 6

					(%)
	379,467.73	53,677.33	827,102.94	1,260,248.00	100.00

3 2013 6

6-52 2013 6

					(%)

					(%)	
		527,100.00				

1
2

		(
		1,656.00		

1

6-54

2

6-55

2012

3

6-56

	2013	6	30	2012	12	31

6-57

2013 6 30

					(%)	

					(%)	


6-60


	2013		2012		2011		2010	
		%		%		%		%
	23,335.08	100.00	35,198.66	100.00	1,093.28	100.00	1,355.20	100.00

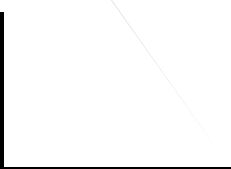

6-61

	2013		2012	
		%		%
	653.54	100.00	0.00	0.00

	2013		2012	
		(%)		(%)







6-68 2013 6 30

		(%)
	270,033.38	89.85

1

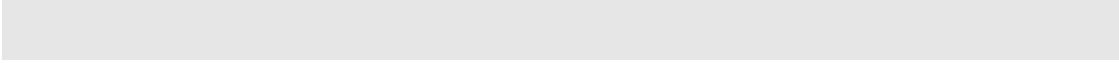
6-69

	2013 6	2012	2011	2010
	521,811.86	508,742.80	349,543.30	257,780.40

2

6-70

	2013 6	2012	2011	2010
	1,636.48	2,066.40	2,421.00	1,960.20





3

A.

B.

7-1 2013 6

	4,452,800.00	1,391,872.90	3,060,927.10

7-2

7-3



1

2



H

1.53 60.047 TD [(D)-20(E)-10(G)-20([0 SC 0 Tr 1050.700.047 TD [(_)]TJ E ó 0ó 0ó\000f Q ó 000_]TJ ET BT

(此页无正文，为《北京京能清洁能源电力股份有限公司 2014 年度第一期短期融资券募集说明书》盖章页)

北京京能清洁能源电力股份有限公司

二〇一四年三月十日

